



STUDY IN UK

INFORMATION GUIDE



INDEX

About us	2
Map	3
Facts	4
Why Choose UK ?.....	4
Tier 4 (Student) VISA	5
Post Study Opportunities.....	5
Top In-Demand Jobs.....	6
Highest Paying Jobs	6
Your Journey at TEJ.....	7
Our Partnered Institutes.....	9
Required Documentation.....	12
Estimated Expenses	13
Explore UK.....	14

ABOUT US



At Tejvisaconsultancy, given a chance, we will make sure that you do not regret putting your hard-earned money with us. We will aim to the best of our capacity to make your/your child's dream of studying abroad come true.

Mr. Kashyap Patwa
[Founder]

Our Founder, only 24 years old, has embarked upon this entrepreneurial journey. Having returned from London, the United Kingdom while, studying for a Master's in Management from Brunel University, he realized the difficulties Indian students faced before studying abroad. So, keeping that in consideration, he has started this venture called Tejvisaconsultancy. Being a millennial in the truest sense, he is tech-savvy, loves meeting new people, tries different things, and enjoys reading. Already at this young age, he has traveled to the major countries in the world, most notably the United States of America, Canada, the United Kingdom, and Hong Kong. While studying in the UK and before going there, he observed the pain parents and students had to face right from choosing a particular agent, the desired course, the right college, and most importantly, managing the finances. He realized the need for transparency and efficient customer service in this field, and that is what he aims to achieve from this start-up.

**NORTH
ATLANTIC
OCEAN**



**Northern
Ireland**

**IRELAND
(EIRE)**

Irish Sea

**Celtic
Sea**

- 1 = Neath Port Talbot (Castell neid Port Talbot)
- 2 = Bridgend (Pen y bont ar Daf)
- 3 = Rhondda Cynon Taf
- 4 = Merthyr Tydfil (Merthyr Tudful)
- 5 = Blaenau Gwent
- 6 = Caerffili (Caerffili)
- 7 = Caerphilly (Caerffili)
- 8 = Neepwy (Casnewydd)
- 9 = Torfaen



**NORTH
SEA**

England

Strait of Dover

FRA

FACTS

- The United Kingdom might not be among the largest countries in terms of land or population; however, at one point they have ruled over the largest empire world has ever seen.
- The UK consists of 4 countries namely England, Scotland, Wales, and Northern Ireland.
- The official language of the UK is English, with a staggering literacy rate of 99%.
- The economy of the UK is the 5th largest in the world.
- More than 300 languages are spoken in London which is home to more than 9 million residents.

Why Choose UK ?

- The United Kingdom (UK) is home to some of the world's oldest universities and colleges having their roots in the 12th and 13th centuries. Coming from such strong legacy, education in the UK has become a benchmark for other countries.
- Universities in the UK have the best academic standards in the world. In fact, four out of the top 10 universities in the world are from the UK.
- Courses in the UK education system are shorter and more intensive than many other countries, which means you'll graduate sooner, and without compromising on quality. This helps to save time and money.
- You can work while studying
 - During regular full-time semesters - 20 hours/week.
 - During Breaks - more than 20hours/week.
- The UK is well connected to major European countries availing you with travel opportunities to explore diverse cultural experience.

TIER 4 (STUDENT) VISA

The visa application is evaluated under the new points-based standards. To get a student visa, you need to acquire 40 points.

30 points are granted for your Confirmation of Acceptance for Studies(CAS) number and the original documents submitted to get the CAS letter. Your bank statement stating that you have sufficient money to meet the maintenance costs will give you the additional 10 points.

To qualify for a Tier 4 Student Visa, you need to have the following:

- An unconditional offer letter, i.e. the CAS letter of a place where you intend to study your desired program.
- Pass the necessary English proficiency requirements and produce a document for the same.
- Provide sufficient funds by way of your bank statement stating that you will be able to sustain yourself and pay for your course.
- Health Insurance and Examination

POST STUDY OPPORTUNITIES

- After completion of studies, you will be eligible for Post Study Work (PSW) Visa that provides you extended stay of up-to 2 years where you can find/work Full Time.
- After that you are eligible to switch to Tier-2 (General Work) Visa.
- Then, on completion of 5 years of work and stay in the UK, you can become a Permanent Resident through the application of Indefinite Leave to Remain (ILR) Visa.
- Finally, you will have to wait at least 12 months after ILR Visa to file for UK Citizenship.



TOP IN-DEMAND JOBS

Occupation	Average Annual Salary (£ GBP)
Software Developer	£ 60,000
Professional Driver	£ 57,000
Business Analyst	£ 50,000
Project Manager	£ 46,000
Operations Manager	£ 45,000
Nurses	£ 40,000
Product Designer	£ 37,000
Architects	£ 35,000
Mechanical & Civil Engineers	£ 33,000
Education Professionals (Teachers)	£ 30,000
Sales & Shop Assistant	£ 20,000

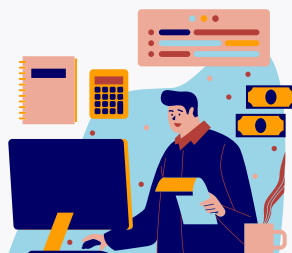
HIGHEST PAYING JOBS

Occupation	Average Annual Salary (£ GBP)
Chief Executive	£ 115,000
Doctors (Specialist)	£ 90,000 – 100,000
Legal Professionals	£ 92,000
Marketing & Sales Directors	£ 86,000
IT & Telecoms Directors	£ 80,000
Financial Managers & Directors	£ 77,000
Aircraft Pilots and Flight Engineers	£ 75,000
Actuaries, Economist and Statisticians	£ 65,000
Production /Manufacturing Directors	£ 61,000
Higher Education Professionals	£ 60,000
Investment Analysts and Advisors	£ 56,000

Your Journey at TEJ



01
Free
Counselling



02
Pre-
Assessment



03
UKVI-IELTS
Coaching



06
Medical
Examination



05
Admission



04
University
Application



07
VISA
Application



08
VISA
Procurement



09
Departure

- **FREE Counselling** regarding Admission and Visa process.
- **Pre-Assessment**
 - Review of academic documents and offering of comprehensive study options.
 - Detailed Budget and finance planning sessions with your parents.
- **UKVI-IELTS** Registration, Coaching, Undertaking Test, and Obtaining Desired Results.
- **University Application**
 - Preparing the Statement of Purpose (SOP) for the students.
 - Application and Follow-ups with the colleges/university regarding your application.
- **Admission** and securing Confirmation of Acceptance for Studies (CAS) letter.
- **Medical Examination** date & center Registration and Process guidance.
- **Visa Application**
- **Visa Acceptance**
- Departure to the **United Kingdom**
- **Post-Departure Assistance**
 - Tuition Fees Payment Guidance.

OUR PARTNERED INSTITUTIONS

S/N	Name of Institution	City	Country
1	Robert Gordon University	Aberdeen	Scotland
2	University of Aberdeen	Aberdeen	Scotland
3	Aberystwyth University	Aberystwyth	Wales
4	Bangor University	Bangor	Wales
5	Bath Spa University	Bath	England
6	Queen's University Belfast	Belfast	Northern Ireland
7	Aston University	Birmingham	England
8	Birmingham City University	Birmingham	England
9	University College Birmingham	Birmingham	England
10	University of Birmingham	Birmingham	England
11	Bournemouth University	Bournemouth	England
12	University of Bradford	Bradford	England
13	University of Brighton	Brighton	England
14	University of Sussex	Brighton	England
15	University of Bristol	Bristol	England
16	University of the West of England	Bristol	England
17	University of Buckingham	Buckingham	England
18	Anglia Ruskin University College	Cambridge	England
19	Cambridge School of Visual & Performing Arts	Cambridge	England
20	Canterbury Christ Church University	Canterbury	England
21	University of Kent	Canterbury	England
22	Cardiff Metropolitan University	Cardiff	Wales
23	Cardiff University	Cardiff	Wales
24	University of South Wales	Cardiff	Wales
25	University of Cumbria	Carlisle	England
26	University of Gloucestershire	Cheltenham	England
27	University of Chester	Chester	England
28	University of Chichester	Chichester	England
29	University of Essex	Colchester	England
30	Ulster University	Coleraine	Northern Ireland
31	Coventry University	Coventry	England
32	Cranfield University	Cranfield	England
33	University of Derby	Derby	England
34	Abertay University	Dundee	Scotland
35	International College Dundee	Dundee	Scotland
36	University of Dundee	Dundee	Scotland
37	Durham University	Durham	England
38	Edinburgh Napier University	Edinburgh	Scotland
39	Heriot Watt University	Edinburgh	Scotland
40	Queen Margaret University	Edinburgh	Scotland
41	Royal Holloway, University of London	Egham	England

42	University of Exeter	Exeter	England
43	Falmouth University	Falmouth	England
44	University for the Creative Arts	Farnham	England
45	Glasgow Caledonian University	Glasgow	Scotland
46	University of Glasgow	Glasgow	Scotland
47	University of Strathclyde	Glasgow	Scotland
48	University of Surrey	Guildford	England
49	University of Hertfordshire	Hertfordshire	England
50	University of Huddersfield	Huddersfield	England
51	University of Hull	Hull	England
52	Keele University	Keele	England
53	Lancaster University	Lancaster	England
54	Leeds Arts University	Leeds	England
55	Leeds Beckett University	Leeds	England
56	University of Leeds	Leeds	England
57	De Montfort University	Leicester	England
58	University of Leicester	Leicester	England
59	Bishop Grosseteste University	Lincoln	England
60	Central Film School	Lincoln	England
61	University of Lincoln	Lincoln	England
62	Liverpool Hope University	Liverpool	England
63	Liverpool John Moores University	Liverpool	England
64	University of Liverpool	Liverpool	England
65	Birkbeck, University of London	London	England
66	BPP University	London	England
67	Brunel University	London	England
68	City, University of London	London	England
69	Hult International Business School	London	England
70	Instituto Marangoni	London	England
71	Kingston University	London	England
72	Le Cordon Bleu-London	London	England
73	London South Bank University	London	England
74	Middlesex University	London	England
75	Queen Mary, University of London	London	England
76	Ravensbourne University London	London	England
77	Regent's University London	London	England
78	University of Arts London (UAL)	London	England
79	University of East London	London	England
80	University of Greenwich	London	England
81	University of Roehampton	London	England
82	University of West London	London	England
83	University of Westminster	London	England
84	Loughborough University	Loughborough	England
85	University of Bedfordshire	Luton	England
86	Manchester Metropolitan University	Manchester	England

87	University Academy 92	Manchester	England
88	University of Manchester	Manchester	England
89	University of Salford	Manchester	England
90	Teesside University	Middlesbrough	England
91	University of Law	Multiple Campuses	England
92	Newcastle University	Newcastle upon Tyne	England
93	Northumbria University	Newcastle upon Tyne	England
94	University of Northampton	Northampton	England
95	Norwich University of the Arts	Norwich	England
96	University of East Anglia	Norwich	England
97	Nottingham Trent University	Nottingham	England
98	University of Nottingham	Nottingham	England
99	Oxford Brookes University	Oxford	England
100	University of the West of Scotland	Paisley	Scotland
101	University of Plymouth	Plymouth	England
102	Arts University Bournemouth	Poole	England
103	International College Portsmouth (ICP)	Portsmouth	England
104	University of Portsmouth	Portsmouth	England
105	University of Central Lancashire	Preston	England
106	University of Reading	Reading	England
107	University for the Creative Arts	Rochester	England
108	Sheffield Hallam University	Sheffield	England
109	The University of Sheffield	Sheffield	England
110	Solent University	Southampton	England
111	University of Southampton	Southampton	England
112	University of Stirling	Stirling	Scotland
113	Staffordshire University	Stroke on Trent	England
114	University of Suffolk	Suffolk	England
115	University of Sunderland	Sunderland	England
116	Swansea University	Swansea	Wales
117	University of Winchester	Winchester	England
118	University of Wolverhampton	Wolverhampton	England
119	University of Worcester	Worcester	England
120	University of York	York	England

And Many More.....

REQUIRED DOCUMENTATION

- Birth Certificate (In English)
- Passport- (Front and back page)
- Recent Photos with white background
- Xth Mark sheet
- XIIth mark sheet & School leaving certificate
- Diploma/Bachelor's/Master's Mark sheet , Degree Certificate and transcripts (which ever applicable)
- Backlog certificate (If applicable)
- Test Scores (UKVI/IELTS)
- Latest resume/ CV (if applicable)
- Statement of Purpose (SOP)
- 2-3 Academic Letter of Recommendations
- Work experience / Recommendation letter (if applicable)
- Bank Letter for Finances (as per requirement)
- Affidavit of Financial Support (if applicable)
- Additional Documents (if applicable)

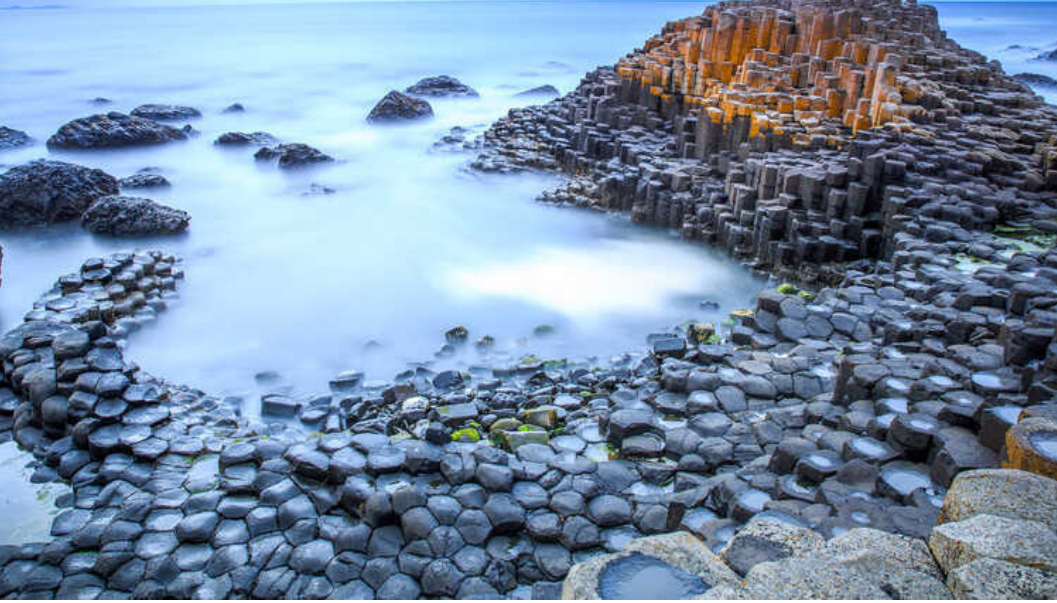
ESTIMATED EXPENSES

S/N	Description	Expense in (£ GBP) (Estimated Amount)**	Expense in (₹ INR) (Estimated Amount)**
1.	UKVI IELTS Coaching (w Books/Material)		₹ 10,000/-
2.	UKVI/IELTS Test Fees		₹ 15,100/-
3.	Admission Process and Consultation		FREE*
4.	CAS release deposit	As per University guidelines (approx. £ 2000)	
5.	Visa Process and Consultation		FREE*
6.	Visa Application Fee	£ 350-400	₹ 35,000 - 40,000/-
7.	Passport Release Charge (After Visa Stamping)	Normal (3 Weeks) £ 250-350 Priority(3-5 Days): £ 550-650 Super-Priority (1 day): £ 1000-1300	₹ 25,000 - 35,000/- ₹ 55,000 - 65,000/- ₹ 1,00,000 - 1,30,000/-
8.	Health Insurance (Per Year)	£ 450-500	₹ 45,000 - 50,000/-
9.	Flight Ticket	£ 300 - 500	₹ 30,000 - 50,000/-
10.	Leisure Expense (Shopping, etc.)	£ 500 - 700	₹ 50,000 - 75,000/-
Estimated One-time Expense		£ 4500 - 5000	₹ 4,50,000 -5,00,000/-
<i>Tuition Fees (Per Year)</i>		£ 12,000 - 25,000	₹ 12,00,000 - 25,00,000/-
<i>Living Cost (Per Year)</i>		London: £ 16,000 Others: £ 12,500	₹ 16,00,000/- ₹ 12,50,000/-
Estimated Annual Expense Requirements		£ 30,000 - 40,000	₹ 30,00,000 - 40,00,000/-

NOTES:

- At TEJ visa consultancy, we do not offer any Visa, IELTS or other Test results guarantee.
- In case of Visa denial/ file withdrawal, the refunded amount might vary as per exchange rates, university guidelines, etc. The student must bear this difference.
- The **CAS release deposit** will be credited later towards the tuition fees payment.
- **£ 1 GBP = ₹ 100 INR (Acc. Nov 2021).**
- Consultation Charges will be applied for applications to Institutions other than mentioned in the catalogue under *Our Partnered Institutes*.
- * Only for Institutes mentioned in the catalogue under *Our Partnered Institutes*.
- ** The cost are as approximated calculations, which may vary as per exchange rates, embassy guidelines, etc.

Giant's Causeway



London Eye



Isle of Wight



Stone Henge

Scottish Highlands



Cardiff Bay

Our Services

Student Visa



Visitor Visa



Canada Immigration

Express Entry - FSW
Express Entry - CEC

Coaching & Test Booking

IELTS, UKVI IELTS, TOEFL, PTE,
DUO-LINGO, Spoken English



+91 7984217150



www.tejvisaconsultancy.com



info@tejvisaconsultancy.com



308, Lileria Paramount,
Opp. Anugrah Hospital,
Near Tulsidham Char Rasta,
Manjalpur,
Vadodara-390011



Follow us

